

# Impact of the SoDo Arena on Port Operations



# Purpose of Heffron Study

- Detail the Port's concerns to help the City, County and Arena proponents evaluate the impacts and develop mitigation measures
- Provide information about Port operations and how those operations will change in the future
- Detail the types of analyses that should be included in the arena's EIS

# What we know and don't know

- The arena's transportation study was preliminary
- All admit that an EIS will be required
- The Port's marine terminals are affected by events in the SoDo today
- A new arena will exacerbate that impact and add up to 100 weekday events per year
- No commitment for mitigation

# What are the flaws of the arena study?

- Not an EIS
- No actual analysis of operations, safety, parking, transit or freight
- Incorrectly assumed that event traffic doesn't occur during afternoon
- Incorrectly assumed that Port traffic does not move at night
- Incorrectly assumed that Port traffic stays west of 1<sup>st</sup> Avenue S
- Incorrectly assumed that Friday is not a weekday (or workday)

# EIS versus Arena Study

	Key Arena EIS	Safeco Field EIS	CenturyLink Field EIS	Arena Study
# Event Days	√	√	√	√
Trip Generation	√	√	√	√
Intersection Operations	√	√	√	
Arterial Operations		√	√	
Safety Analysis	√	√	√	
Parking Analysis	√	√	√	
Pedestrian Analysis	√	√	√	
Alternative Sites	n/a	√	√	

# EIS versus Arena Study # of Intersections Evaluated

- Key Arena EIS = 15
- Safeco Field EIS = 31
- CenturyLink Field EIS = 54
- Arena Study = 0

# Port Concerns

Additional events at a new arena will make it harder for trucks to reach the Port, increase cargo shipping costs, and affect the Port's ability to retain and attract customers

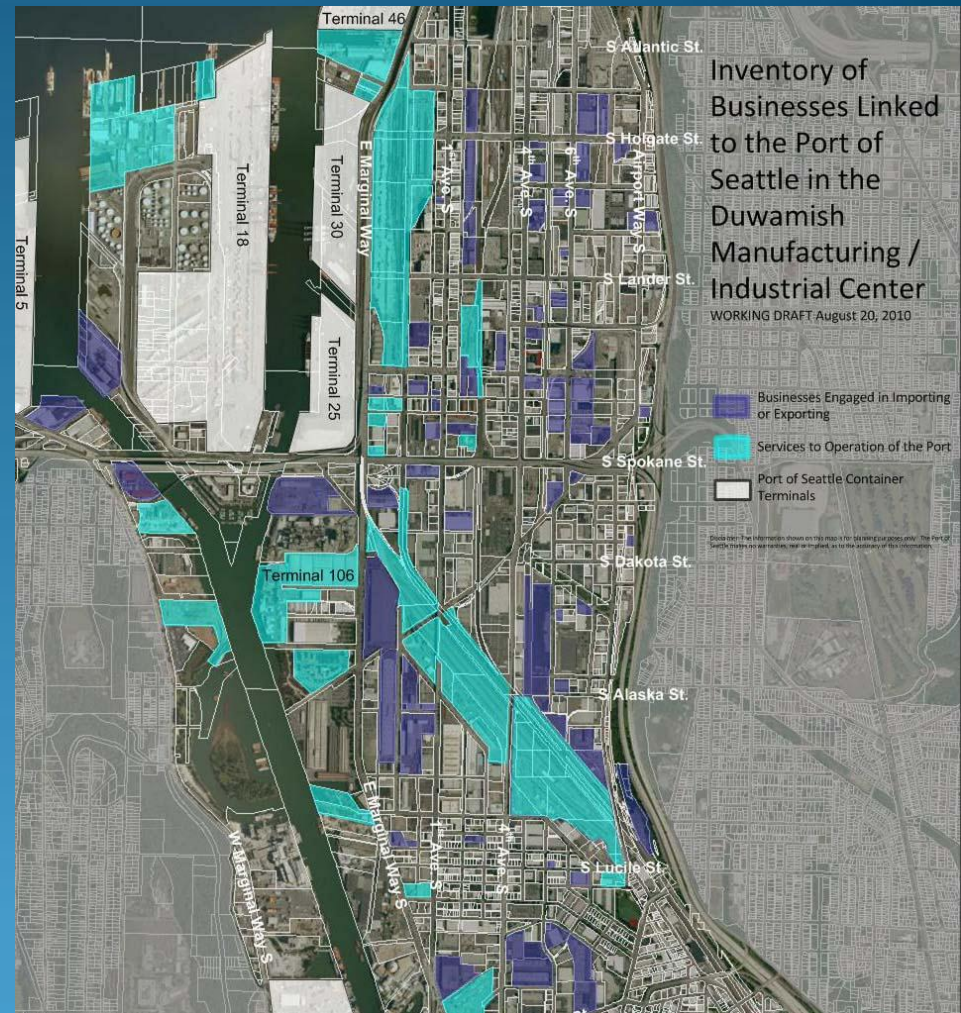
Shippers primary criteria:

Travel Time

Reliability



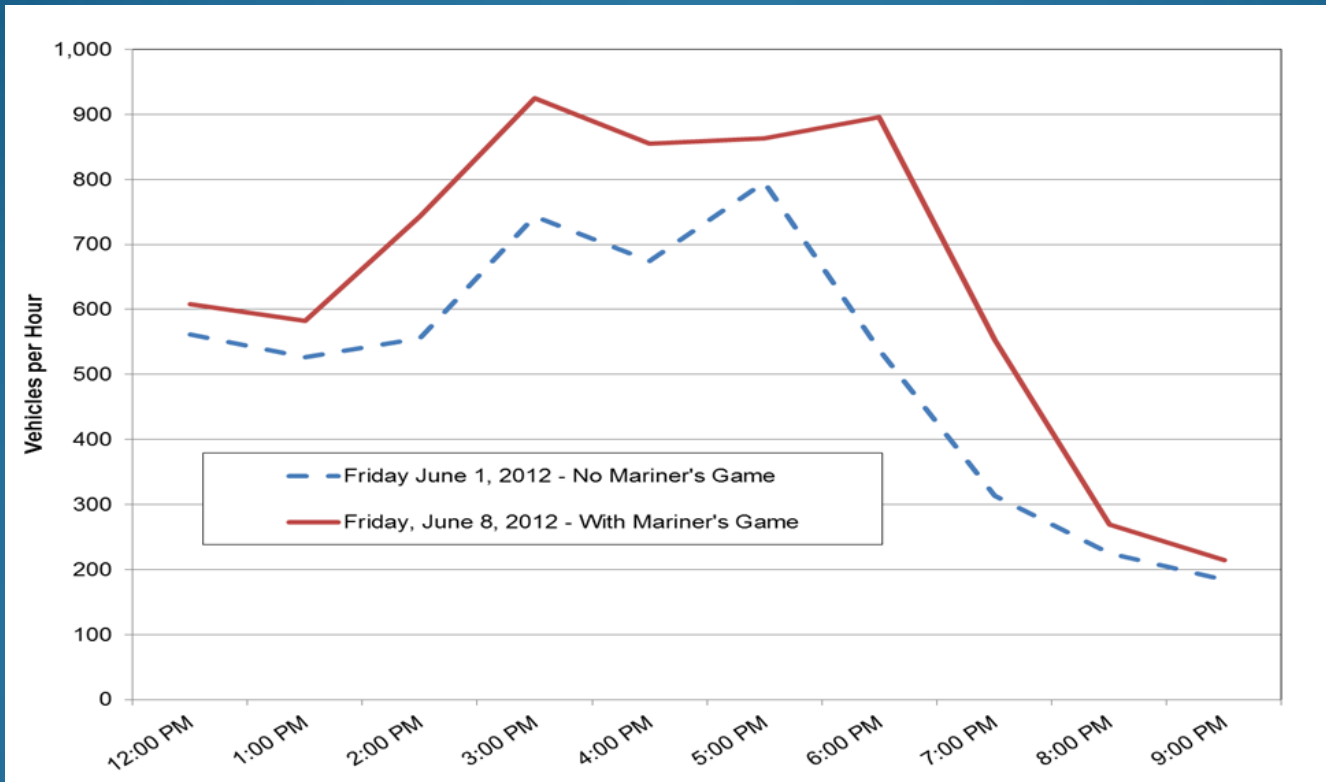
# Incompatible land uses will affect Port operations





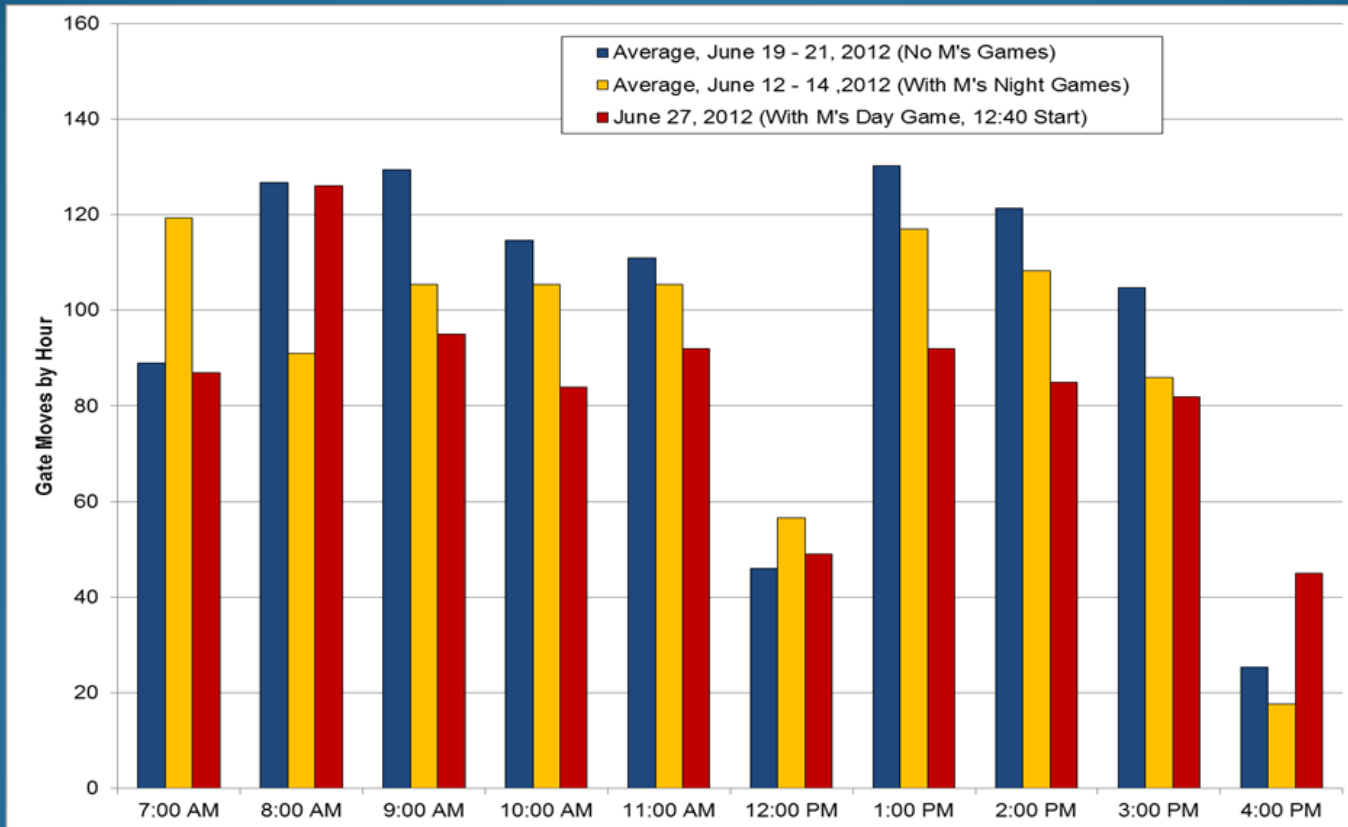
# Events reduce the Port's effective operating hours

## Effect of Mariners Games on I-90 Traffic Entering SoDo



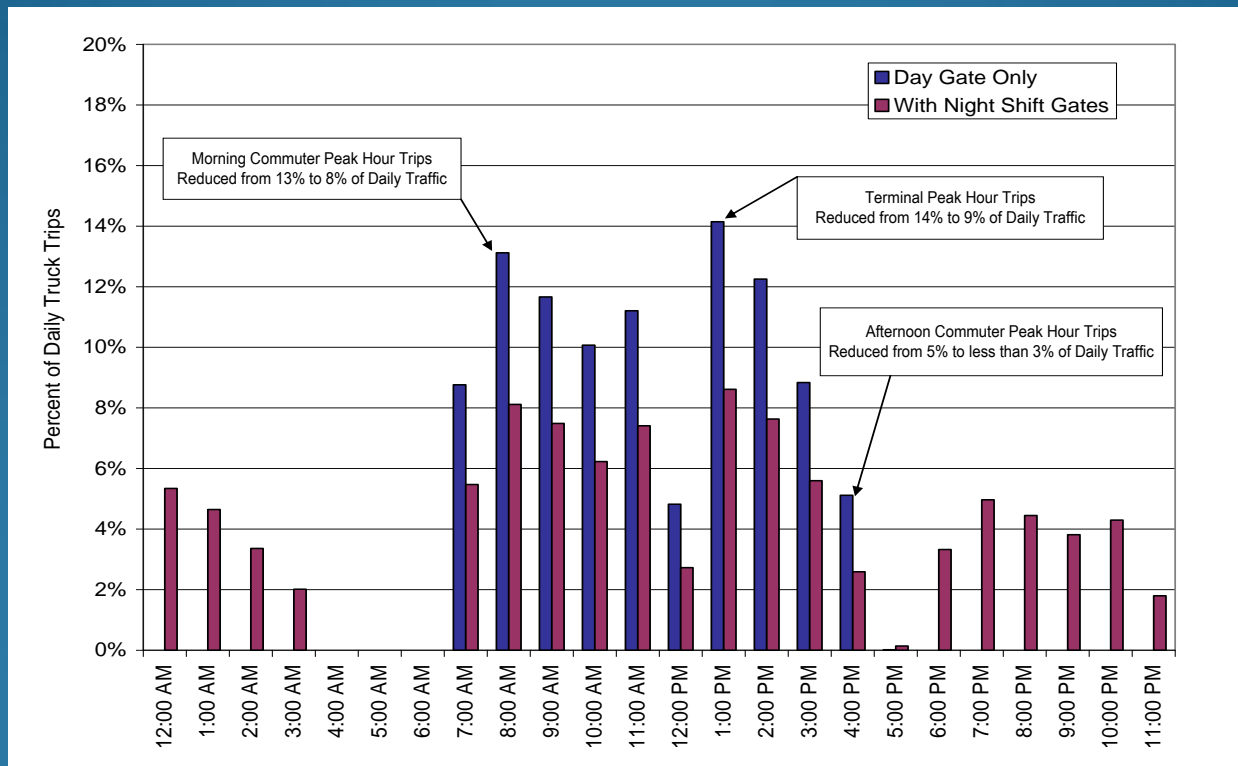
# Events reduce the Port's effective operating hours

## Effect of Mariners Games on Terminal 46 Gate Moves

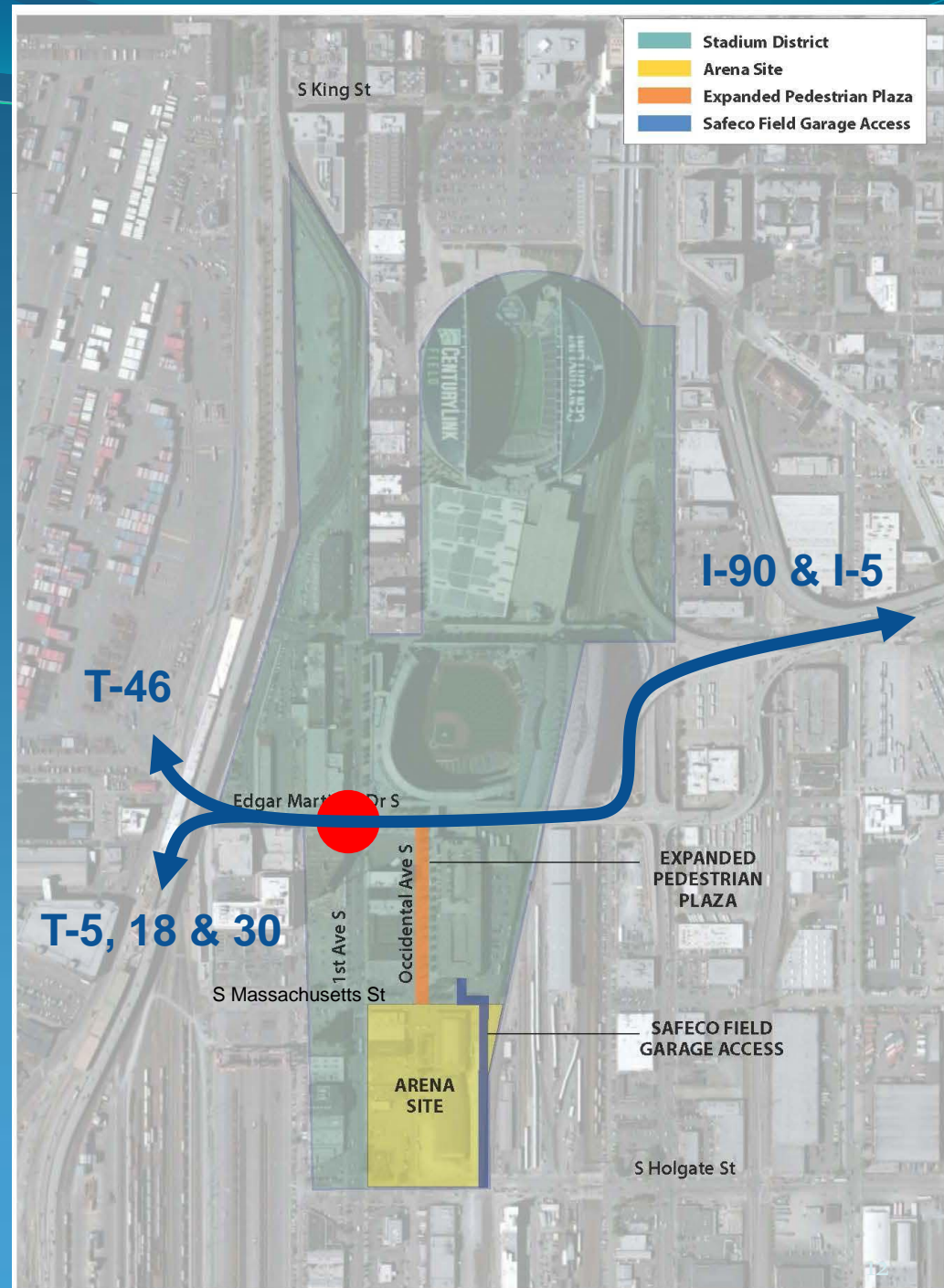


# Port traffic will occur in the evenings and conflict with new arena event traffic

## Effect of Night Gates on Hourly Traffic Volumes



Street vacations will exacerbate congestion along the Port's main freeway access routes



Additional pedestrian and vehicular activity on Holgate Street will increase the risk for train-related collisions and rail and road system delays



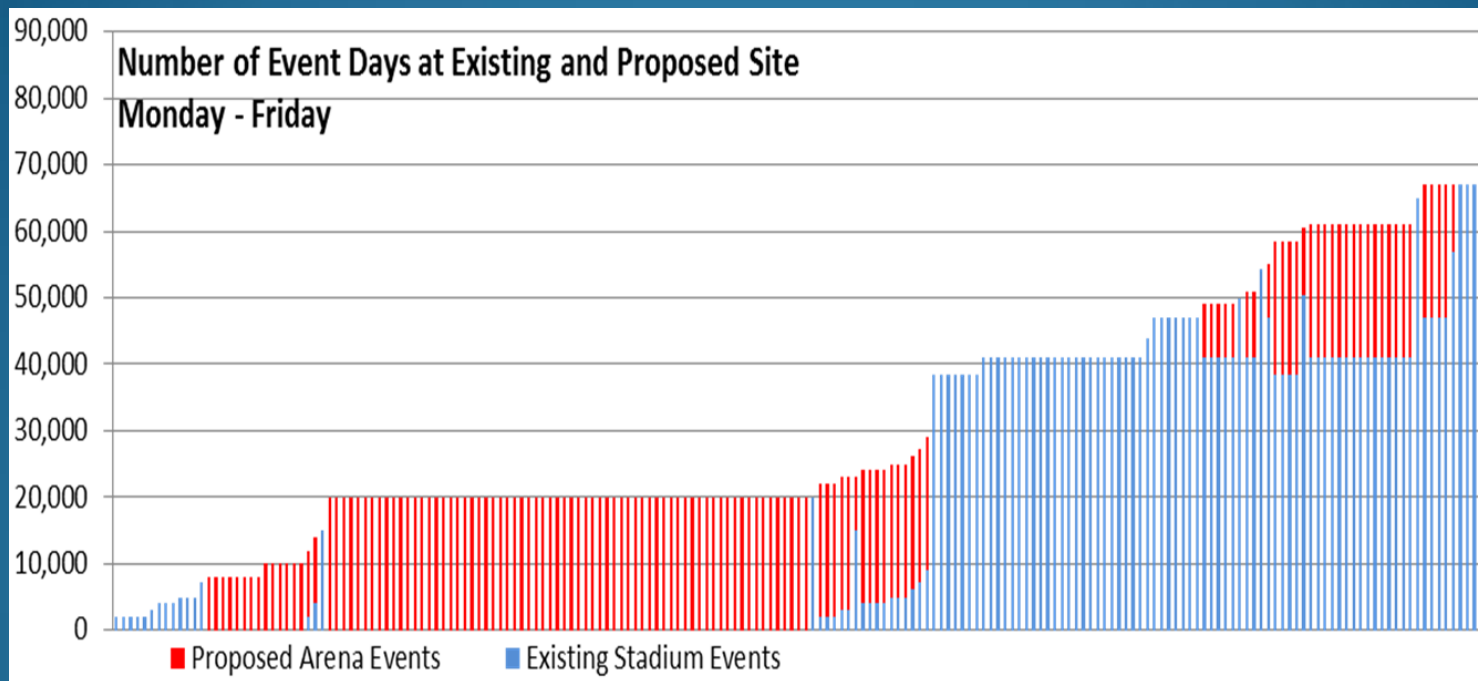


# Holgate Street Crossing After Event



# Concurrent events greatly exacerbate congestion to, from, and within SoDo

Findings from King County Expert Review Panel





# Concurrent events greatly exacerbate congestion to, from, and within SoDo

## Findings from King County Expert Review Panel

	<u>Weekday Events</u>		<u>Weekend Events</u>	
	Base Year	Banner Year	Base Year	Banner Year
Safeco & CenturyLink Field # of Concurrent Events	65 1	79 1	46 5	51 5
New Arena	71	101	33	41
<b>Grand Total</b>	<b>136</b>	<b>180</b>	<b>79</b>	<b>92</b>
# of Concurrent Events	7	23	10	17

## Alternative sites have not been considered

Ten alternative sites were evaluated for Safeco Field

- Five sites in vicinity of Kingdome
- Myers Way near Olson Place
- Seattle Commons
- South Lake Union
- Bus Barn Site at 5<sup>th</sup> & Mercer
- Sand Point at Magnuson Park

## Arena has not detailed its mitigation needs or identified funding for mitigation

- Additional Parking
- Pedestrian Improvements
- Public Benefits for Street Vacations
- Police-officer control
- Street system improvements
- Traffic management
- Trip reduction plan

# What needs to be done?

- An EIS must be performed for arena
- Evaluate alternative sites
- Identify mitigation measures that retains Port operations
- Work with the Port on event traffic controls
- Commit to mitigation with funding and implementation strategy